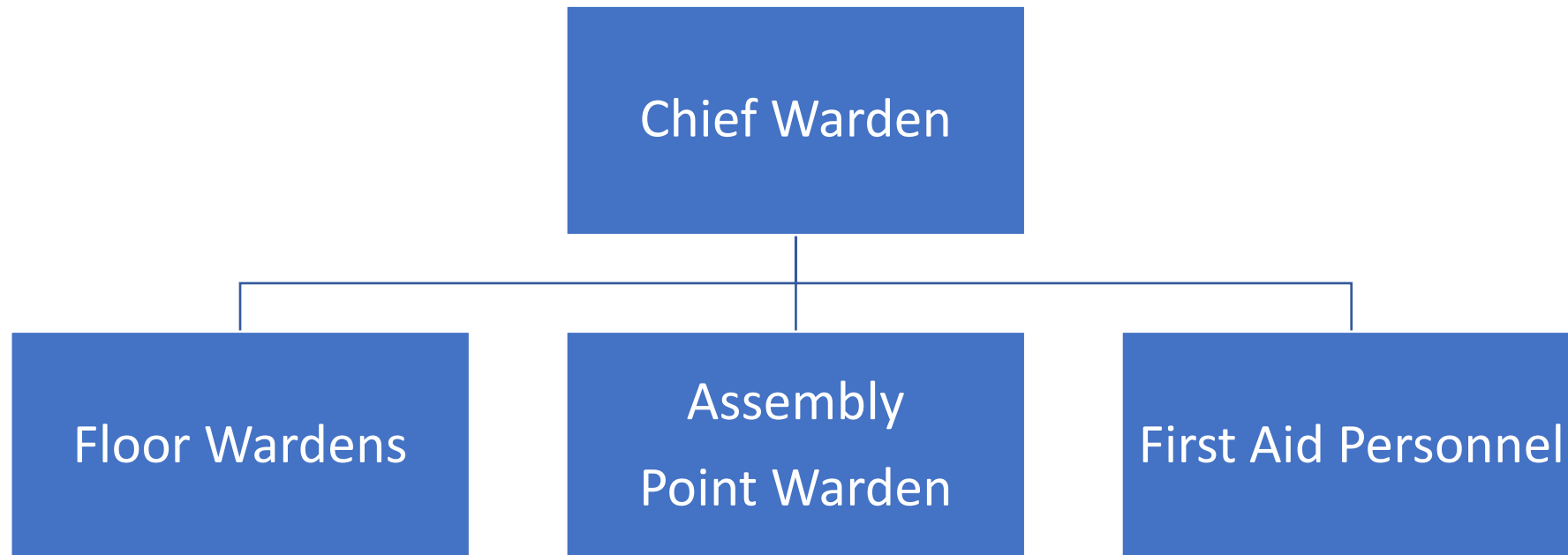


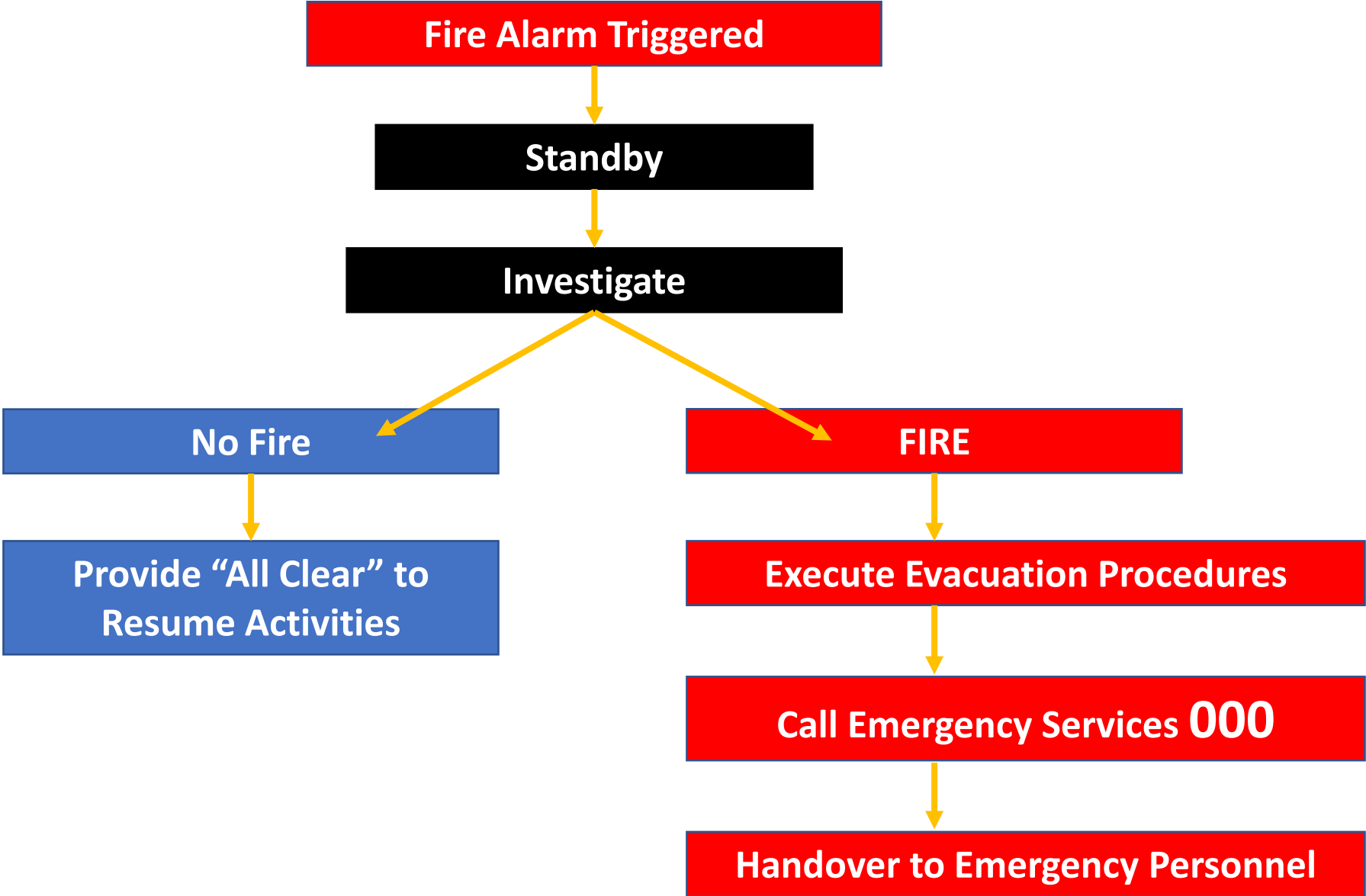
Evacuation Team Training

29 Jan 2022

ICC Evacuation Team:



Evacuation Team Responsibilities:



Fire Alarm triggered.

Beep Beep Beep Beep !!!!

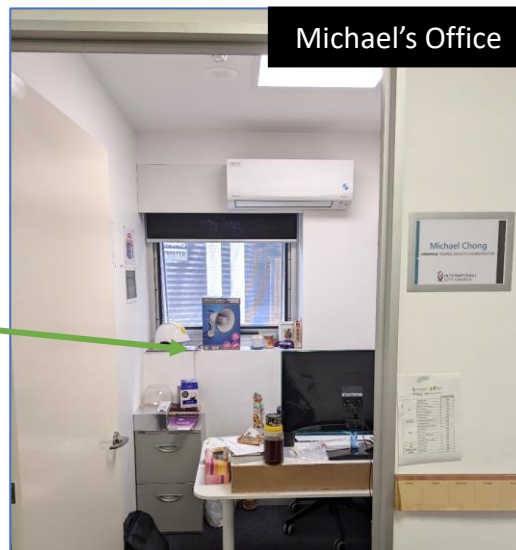
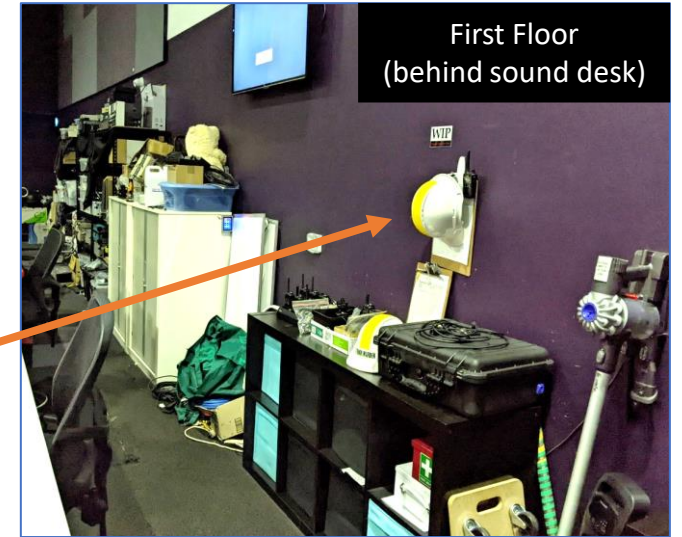
1. Standby

- Go to designated WIP (warden intercom points).
- Put on Warden hat.
- Switch on walkie talkie and wait for Chief Warden's instructions.
- Clipboard to write notes.
- Location diagram on the back to locate fire.

Chief Warden – Go to fire panel.

Floor Wardens – Go to WIP

Assembly Point Warden –
Go to Michael's Office
(locate megaphone and first aid kit)



2. Investigate

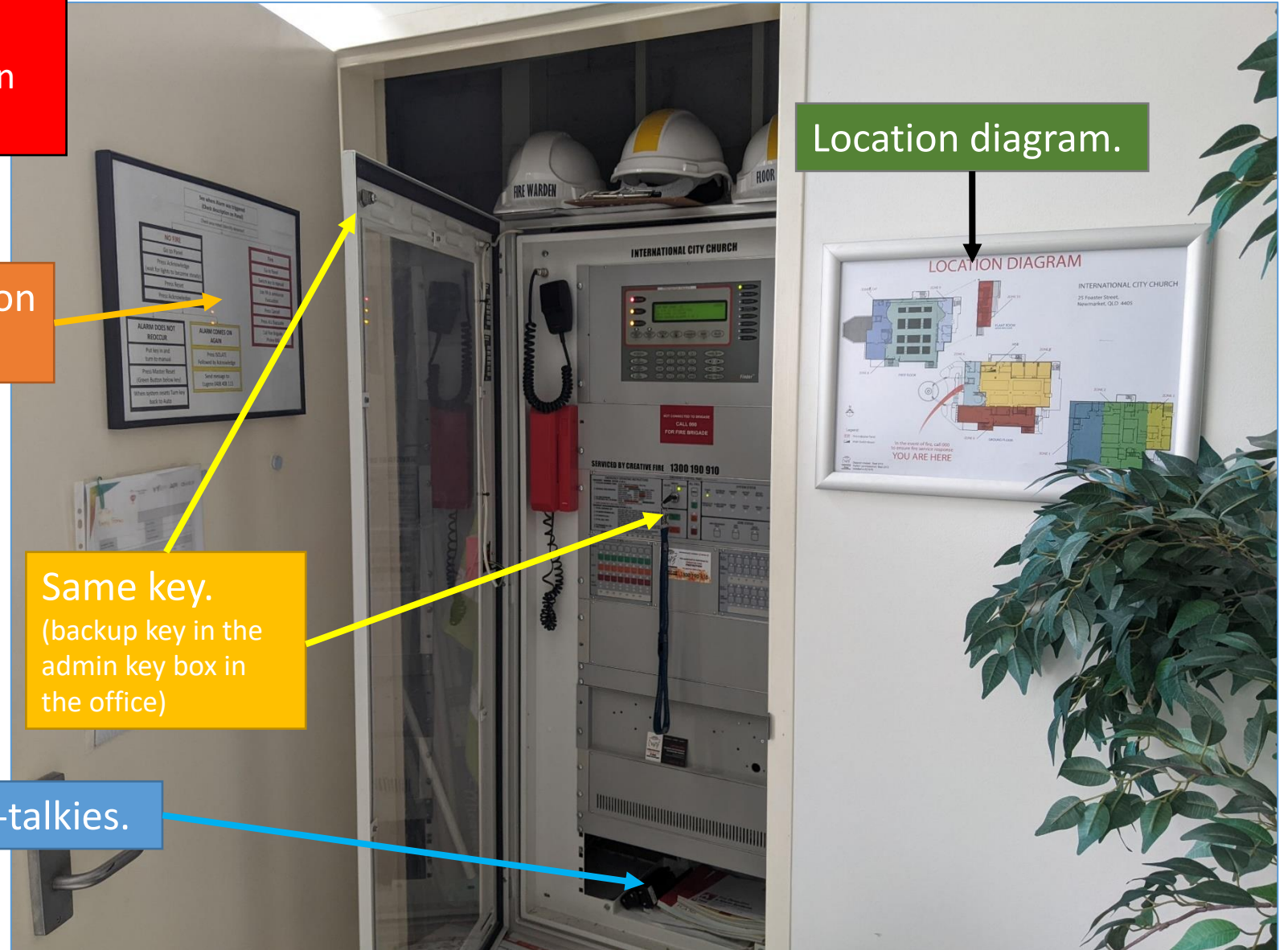
- Chief Warden checks information on Fire Panel.
- Chief Warden might ask Floor Warden to investigate alarm triggered zone.

Fire panel operation instructions.

Same key.
(backup key in the admin key box in the office)

Walkie-talkies.

Location diagram.



3. Emergency Assembly Point



Bottom carpark
(next to Spencer Park)

*Backup assembly point (in case of flooding)
is at the front of the building, top carpark.

4. Evacuation

Woop Woop Woop Evacuate !!!

Team Members	Areas in Charge	Responsibilities
Chief Warden	Fire Panel	<ul style="list-style-type: none"> • Check details on Fire Panel. • Make announcements via the Fire Panel PA System. • Make 000 call in case of real fire. • Be the central person to collect all info from the Floor Wardens, make a summary and convey to Fire Department when they arrive. • Be the main contact person between ICC and the Fire Dept. during the emergency.
Floor Warden	Lower Ground Floor	<ul style="list-style-type: none"> • Inform all persons to exit building via emergency exits (follow “green man” signs). • If a person refuses to leave, take down their name and location and report to Chief Warden.
Floor Warden	Ground Floor	<ul style="list-style-type: none"> • Check all rooms including toilets and close the door behind you as you leave (if safe to do so and do not lock). • In case of bomb threat, open all doors instead.
Floor Warden	First Floor	<ul style="list-style-type: none"> • Assist any people with special needs to the nearest Emergency Exit. If not able to help, report name and location of person to Chief Warden. • Do not allow people to use the elevator. • Refuse re-entry into the building. • Thereafter head to Emergency Assembly Point.
Assembly Point Warden	Emergency Assembly Point Car Park	<ul style="list-style-type: none"> • Coordinate headcount. • Provide first aid kit. • Refuse re-entry into the building. • Ensure everyone stays within the assembly point (no removal of vehicles permitted until permission from Chief Warden or Fire Department). • Wait for instructions from the Chief Warden before giving the “ALL CLEAR” for people to return into the building.

5. How to operate Fire Panel

**START
HERE**

Fire alarm triggered.

1. Turn alarm off.

Switch key to MANUAL.

Press BUZZER MUTE/ACK.
(orange button below the key)

Press MASTER RESET.
(green button below the key)

2. Check for fire or false alarm.

Locate ZONE on the display and refer to the Location Diagram.

3. Make announcement.

Check that key is switched to MANUAL.

Press ALL P.A. and speak using the mouthpiece microphone – “fire alarm has been triggered, please standby for further instructions”.

Press CANCEL to turn off microphone.

4. FIRE?

FALSE ALARM

Press ACKNOWLEDGE.
(under the display)

Press RESET.
(under the display)

Press ACKNOWLEDGE.
(under the display)

If alarm rings again and it is verified that there is no fire, press ISOLATE (under the display) followed by ACKNOWLEDGE.

Make announcement using instructions in Step 3 – “false alarm detected, people can resume activities, please regard all future alarms as true and respond accordingly”.

Switch key to AUTOMATIC to reset the system.

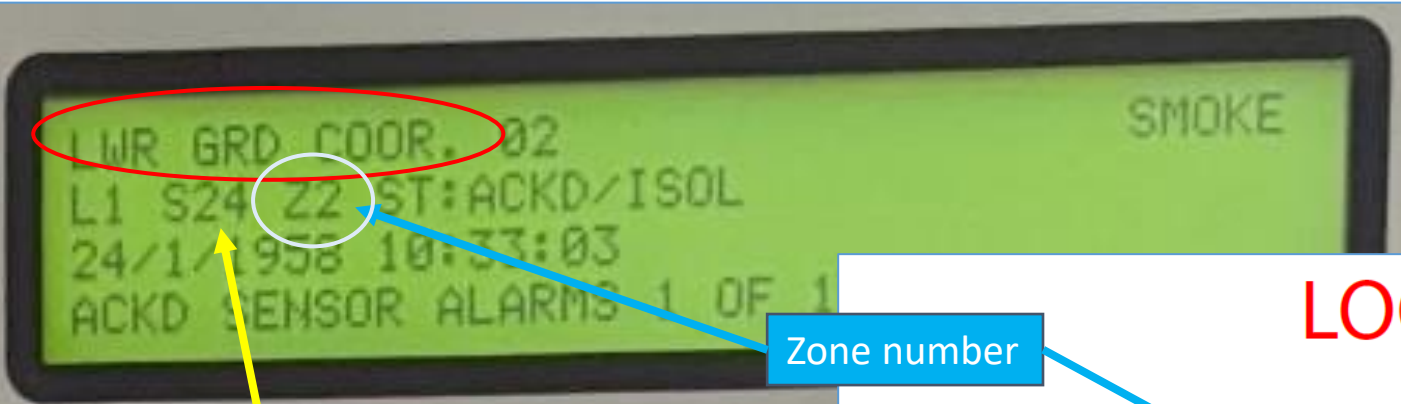
FIRE

Make announcement using instructions in Step 3 – “please evacuate immediately”.

Check that key is switched to MANUAL.

Press ALL EVAC.
(bottom right of key)

Call Fire Department **000**



Zone number

Sensor number



LOCATION DIAGRAM

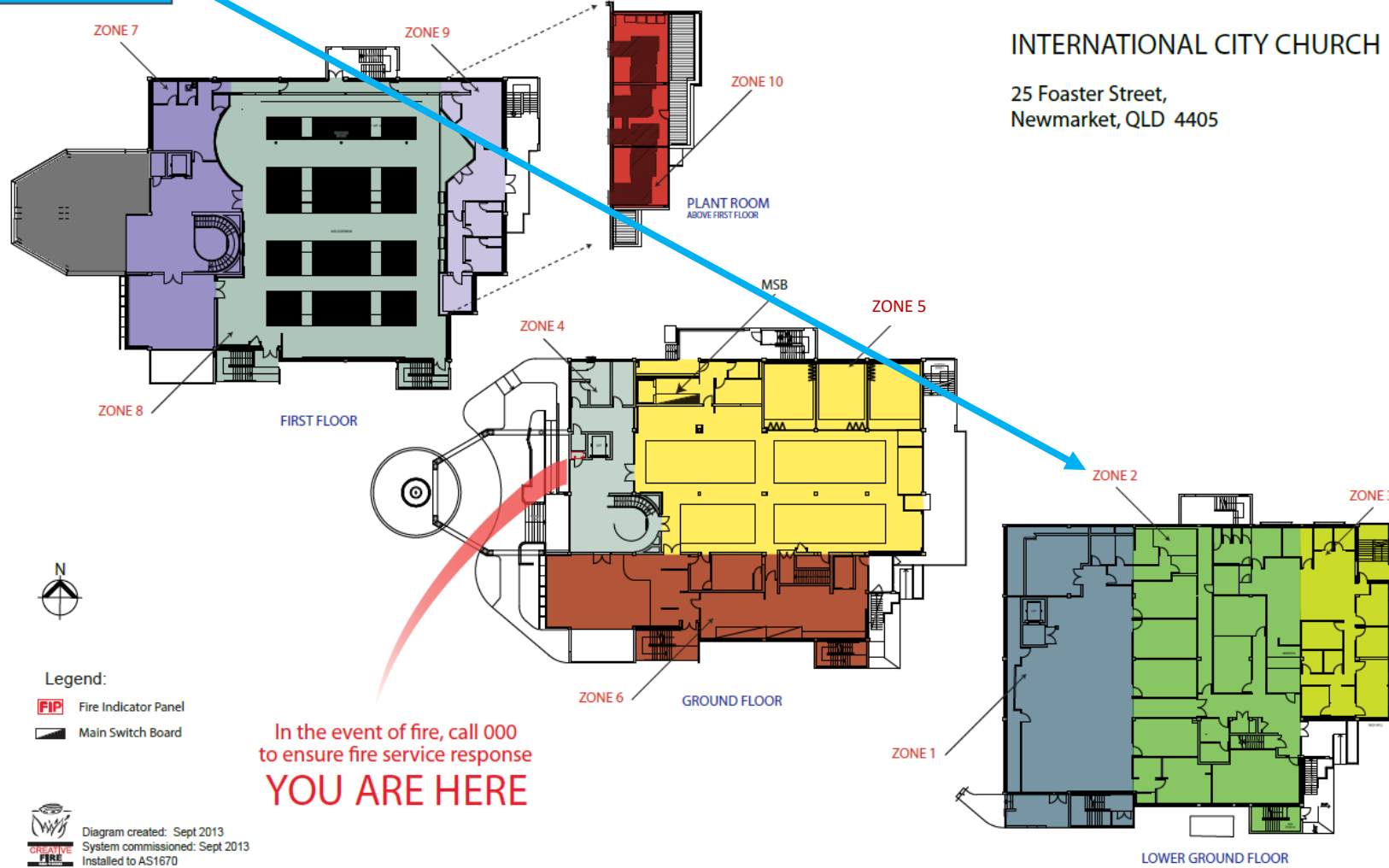


Diagram created: Sept 2013
System commissioned: Sept 2013
Installed to AS1670

5. House Keeping

Take note evacuation routes and exits.

